

L.V COUNTRY LINE DANCERS

Hi Everyone....Well this Newsletter is a bit of a diary with everything....and I mean everything that will be coming up in the next few months...and boy have we got a lot:)

HOLIDAY IN BRIEF...WE HAVE

AUGUST 26TH - SEPTEMBER 3RD

There are no classes from Monday 26th August through to Monday 2nd of September
Classes will resume Tuesday the 3rd September



and as you are all on holidays....you have no excuse NOT to come out to our M@D Camp:)



M@D CAMP...AUGUST 28TH - 31ST

These few days out at Wooten Lodge Coongulla are going to be such a fun time together. So much going on and you can do whatever you like....enjoy the program...play the games...watch telly...sit back and relax amongst nature....choice is yours. If you can't come out for the 3 days....check out the program in this newsletter and come out for the day and enjoy the fun. But remember...you do need to book in. All Prices are on the flyer.

All monies raised is for Gippsland Lifeline

NEWBOROUGH SOCIAL SEPTEMBER 8TH

Our next Social is September 8th which is Colours and Flowers Theme:) Caters for all levels 11 a.m. - 4 .30 p.m. This is our last chance to raise a bit more money at our socials for Gippsland Lifeline.



GIPPSLAND LIFELINE 2 DAY EVENT SEPTEMBER 21ST AND 22ND

Gippsland Lifeline 2 Day Special Event. This is a wonderful weekend and brings all our tally's together to see what we have raised for the year. Tickets are Prepaid and Prebooked. Get your tickets now from Linda as numbers are capped. For more details check out our flyer in this newsletter.

NEWBOROUGH SOCIAL OCTOBER 13TH

No theme for this Social:). Caters for all levels 11 a.m. - 4 .30 p.m.



NEWBOROUGH SOCIAL NOVEMBER 3RD

Dress Black or Spookie for our Belated Halloween Party
Caters for all levels 11 a.m. - 4 .30 p.m.



HEYFIELD NOVEMBER 24TH

Heyfield Christmas Gentle Social at the Heyfield Public Hall. Get your Chrissie gear out and come along for a great afternoon. Starts at Midday - 4 p.m.

NEWBOROUGH CHRISTMAS SOCIAL DECEMBER 1ST

Our Christmas Social at Newborough....winding down from an extremely hectic year:)
11 a.m. - 4.30 p.m



OUR LAST ALL CLASSES GET-TOGETHER AT NEWBOROUGH

This is where all our classes come together for our last big day together before we head off for our Christmas Break. Starts at 9 a.m. to 1 p.m.



**MERRY
CHRISTMAS**

M@D CAMP



WOOTTON LODGE
COONGULLA



AUGUST 28 - 31, 2024

LV Country Line Dancers fundraiser for



Bookings - Leanne 0422 916 463

Dietary - Heather 0429 451 332

Event - Linda 0438 275 327

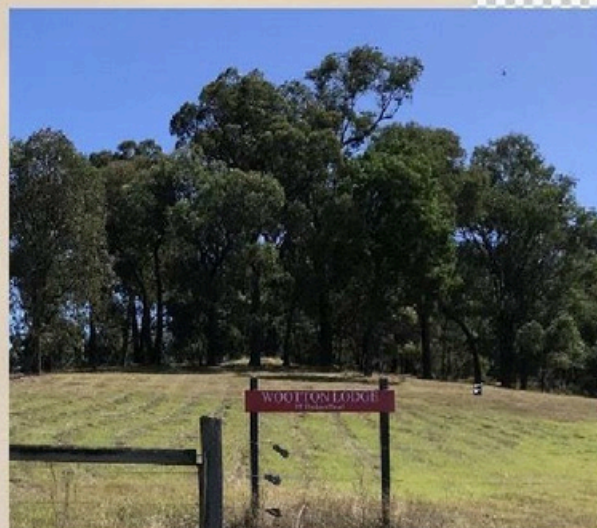
LV Country Line Dancers

*Arrive from 5pm Wednesday 28th to settle in and be ready for 4 nights,
with 3 full on days of fun and activities from 7pm, continuing through to
Saturday evening.. departing at you leisure Sunday 1st morning*

Whole camp stay - \$360 .. bottom bunk \$340 .. top bunk
Each cabin sleeps 8 (4 x single bunk beds) .. being all male / all female cabins
\$340 .. caravans, mobile homes, tents (no power/water hook up)
\$285 .. for 2nd person

Not staying on grounds .. \$85 full day visit, \$25 first evening
ALL WHO ATTEND CAMP AT ANY TIME MUST BOOK BY 12th AUGUST

Costs cover all accommodation, activities,
breakfast, m/tea, lunch, a/tea, dinner and
supper



M@D CAMP PROGRAM

WOOTEN LODGE

THURSDAY

7-9 AM - BREAKFAST

9-10.30 CAMP WELCOME
LINE DANCE GENTLE SOCIAL WITH LINDA

10.30AM - MORNING TEA

11AM-MIDDAY - LOUNGEROOM CRAFTS

12-1PM - LUNCH

1-3PM - GIPPSLAND TANGO
DEMONSTRATION AND BASIC LESSON

3-3.30PM - AFTERNOON TEA

3.30-5.30 - TBA &
NARKOOJEE WINES TASTING

5.30-7PM - FORMAL 3 COURSE DINNER

7PM - BAW BAW LATIN BALLROOM
DEMONSTRATION AND BASIC LESSON

9.30PM - CAMPFIRE & SUPPER



FRIDAY

7-9 AM - BREAKFAST

10-10.30 - GENTLE EXERCISE
LOUNGEROOM CRAFTS

10.30AM - MORNING TEA

11-11.30AM - MARGIE'S TRIVIA

12-1PM - LUNCH

1-3PM - TBA

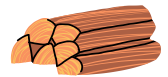
3-3.30PM - AFTERNOON TEA

4-6PM - ROCK'N'ROLL WITH
TED ON ROCK & GATHA ROCK

6PM-7PM - DINNER

7PM - TBA
KARAOKE

9.30PM - CAMPFIRE & SUPPER



SATURDAY

7-9 AM - BREAKFAST

9-10.30 - LINE DANCING &
CLOGGING BASICS CLASS

10.30AM - MORNING TEA

11AM-MIDDAY - BARB'S BINGO

12-1PM - LUNCH

1-2PM - TBA

2-5 - HOEDOWN
SQUARE DANCE DEMO & BASIC CLASS

3PM - AFTERNOON TEA

5-6 - LINE DANCE & CLOGGING

6PM-7PM - DINNER

7PM - TBA

9.30PM - CAMPFIRE & SUPPER

M@D CAMP

WOOTEN LODGE

Can't stay for the whole camp ?!?

Come on over for our
Silent Disco or Hoedown !!

You are able to
Stay a day
Stay a night
Morning visit
Afternoon visit

Accommodation per night - single bunk bed \$20-25,
caravan, motorhome, etc \$25 per site (2-3 persons)

Camp activity daily entrance is \$20

Morning, afternoon & evening suppers - \$5 each

Breakfast- \$10, Lunch \$15, Dinner \$20

Silent Disco - \$25 (incl. supper)

Hoedown - \$25 (incl. supper)

BOOK IN ANY OF THE LISTED OPTIONS ABOVE WITH LEANNE

..PAYMENT BY CASH, OR DIRECT DEBIT TO LINDA

**BY PRINTING WHAT YOUR PAYMENT IS FOR, ON FRONT ENVELOPES
SUPPLIED - THE DAY/S, EVENTS THAT YOU ARE ATTENDING, YOUR NAME,
AND WE WOULD LIKE THE REGO OF THE VEHICLE YOU WILL BE PARKING
WHILE AT CAMP**



WELCOME TO M@D CAMP
ON
**WEDNESDAY
28TH**

7 pm to 10.30

Silent Disco



DRESS THE PART, OR NOT .. IT'S NOT COMPULSORY

The disco music genre spawned its own fashion craze in the mid- to late 1970s. Young people gathered in nightclubs dressed in new disco clothing that was designed to show off the body and shine under dance-floor lights. Disco fashion featured fancy clothes made from man-made materials.

2 - 5 pm

M@D



Hoedown

SATURDAY
31ST AUGUST

In the
Rec Shed



THE
OWE

10



Gippsland Lifeline Fundraiser Huge 2 Day Line Dance Event

SEPTEMBER 21ST AND 22ND
NEWBOROUGH PUBLIC HALL
THEME: **BLUE AND YELLOW**

RAFFLES

Saturday 21st

Beginner - Easy Social

Midday - 4 p.m

Sunday 22nd

Easy - Intermediate Social

11 a.m. - 4 p.m.

Numbers are capped so bookings are essential
and tickets prepaid \$15

(Tickets on sale for students til Sept then
open to outside classes)

Please bring a pressie for the raffle table
and plate for shared supper
Tea and Coffee supplied

Photo booth will be set up in the foyer

*Let's get behind Gippsland Lifeline and
help them do what they do best*

LUCKY NUMBERS

MAGNIFICENT
PATCH WORK QUILT
RAFFLE

Contact

Linda Pink

0438275327

ldpink@bigpond.net.au



Contact

Sue Luke

0427110070

soo.gus@dcsi.net.au